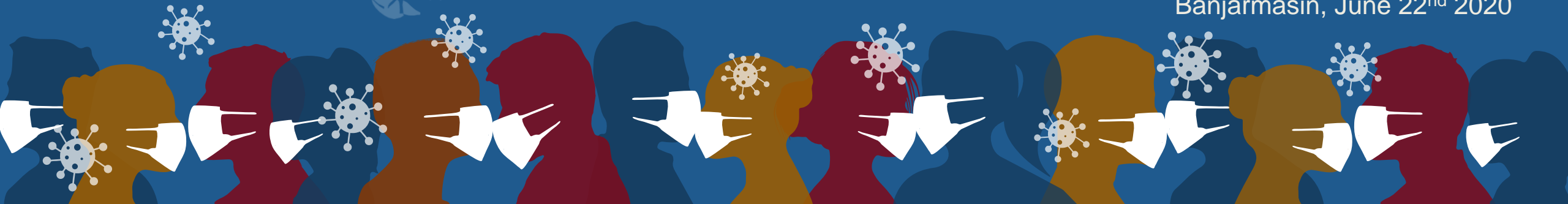


# Strategy to Facilitating the Quality of Higher Education in the COVID-19 Pandemic Era

**UDIANSYAH, Ph.D.**

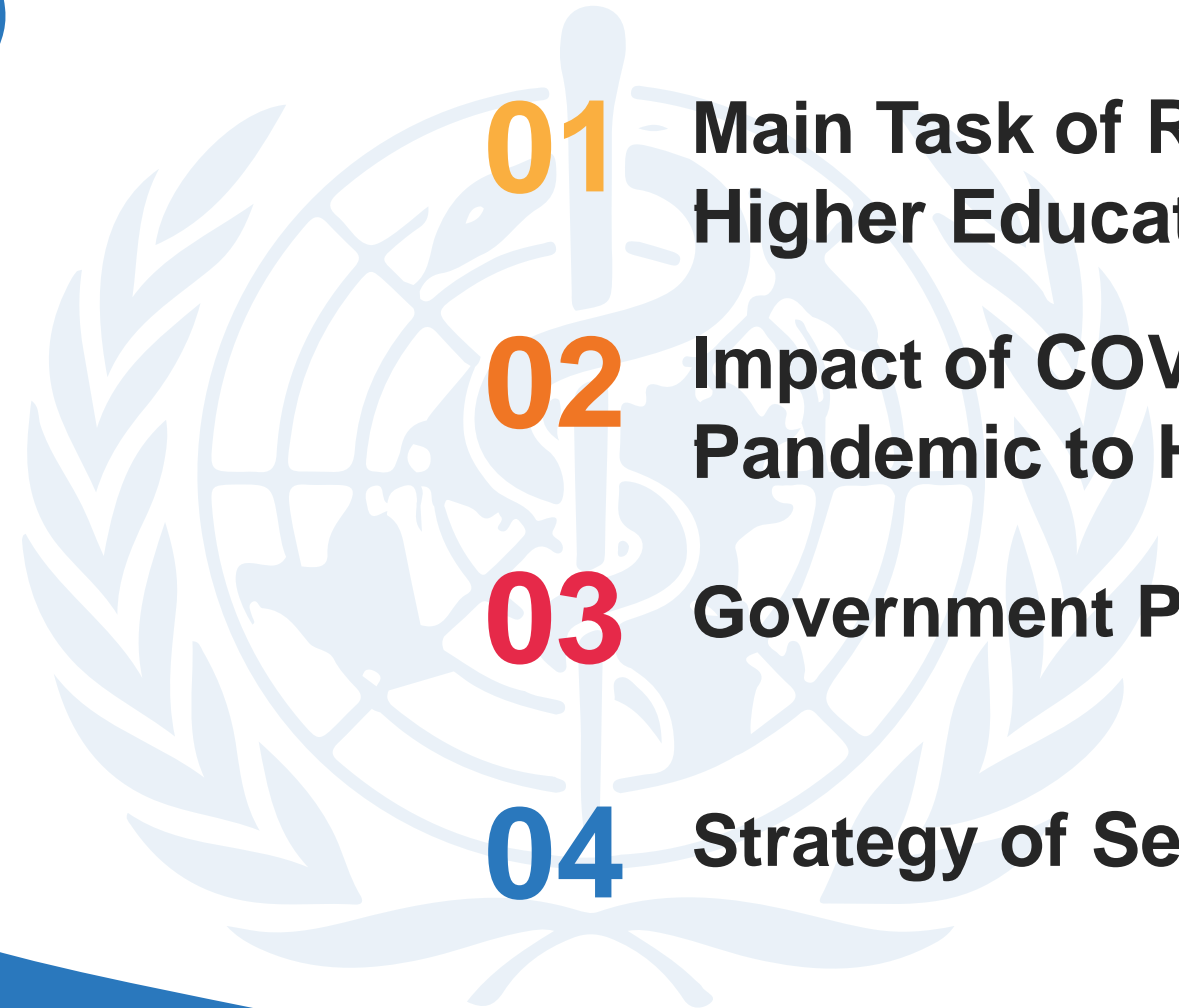
Presented on International Webinar on Strengthen Strategy of Higher Education  
to Face the New Normal in the era COVID-19 Pandemic

Held by Sari Mulia University  
Banjarmasin, June 22<sup>nd</sup> 2020





# OUTLINE

- 
- 01** Main Task of Regional Higher Education Service
  - 02** Impact of COVID-19 Pandemic to HE Institution
  - 03** Government Policies
  - 04** Strategy of Service

# Regional Higher Education Service

**Main Task**

**Based on Regulation**

**Facilitating**  
**Higher Education**  
**Institution to Improve their**  
**Quality**



**Indonesia : 4500 universities**  
**Kalimantan : 170 universities**



# IMPACT OF COVID-19 TO UNIVERSITY

*Total Respondens : 130 University  
Time Survey : May 12<sup>th</sup> to May 22<sup>nd</sup> 2020*

# MITIGATION OF THE UNIVERSITY AND THEIR STUDENTS



INTERNATIONAL STUDENTS SUPOORTS

2

MONITORING OVERSEAS STUDENTS

2

SCHOLARSHIP

11

DISCOUNTED TUITION FEE

17

LOGISTIC SUPPORT

18

HEALTH SERVICES

20

PSYCHOLOGY SERVICES

22

INTERNET CONNECTION SUPPORT

25

STUDENTS TRACKING

62

E-REGISTRATION

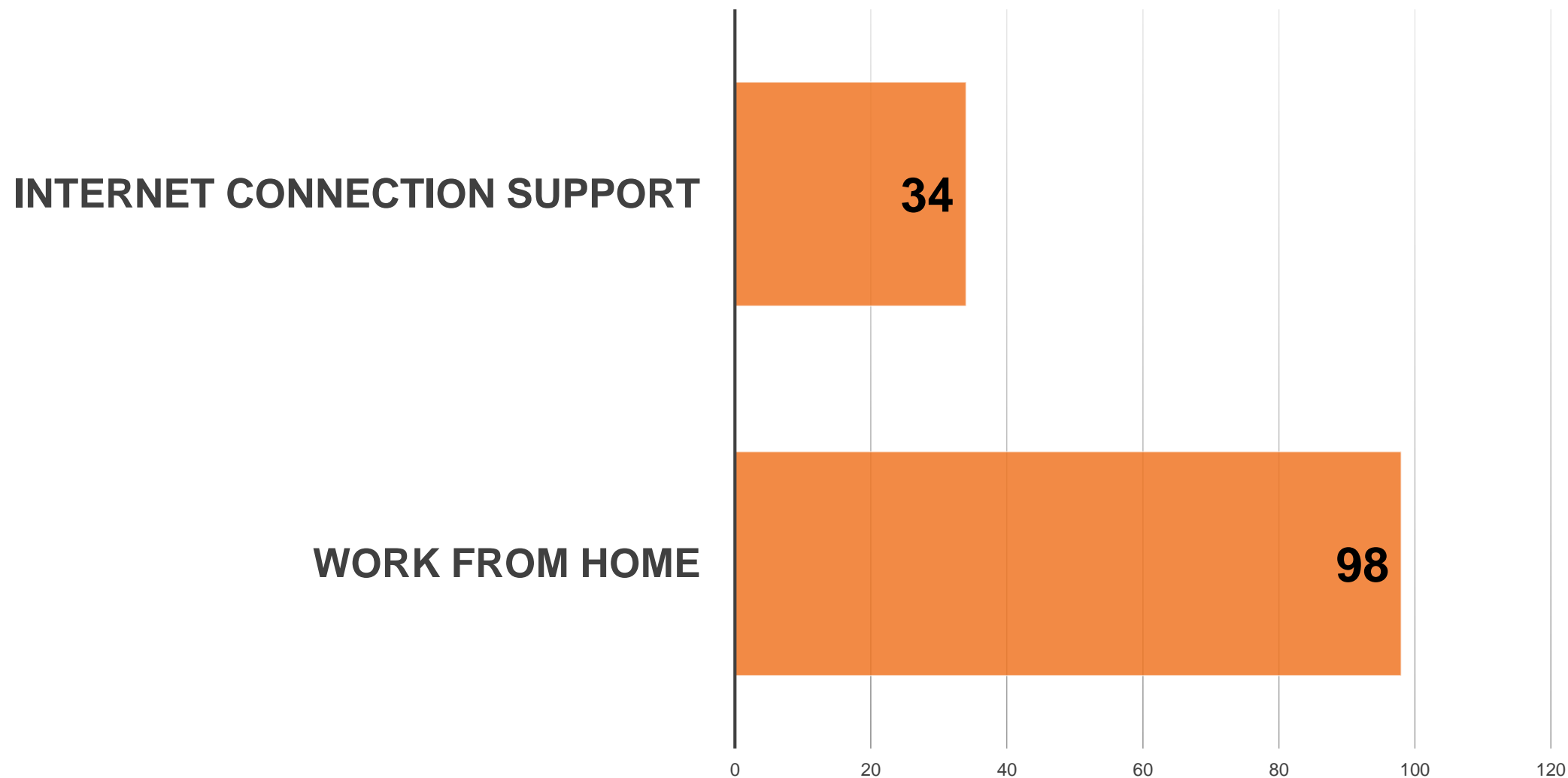
81

E-LEARNING

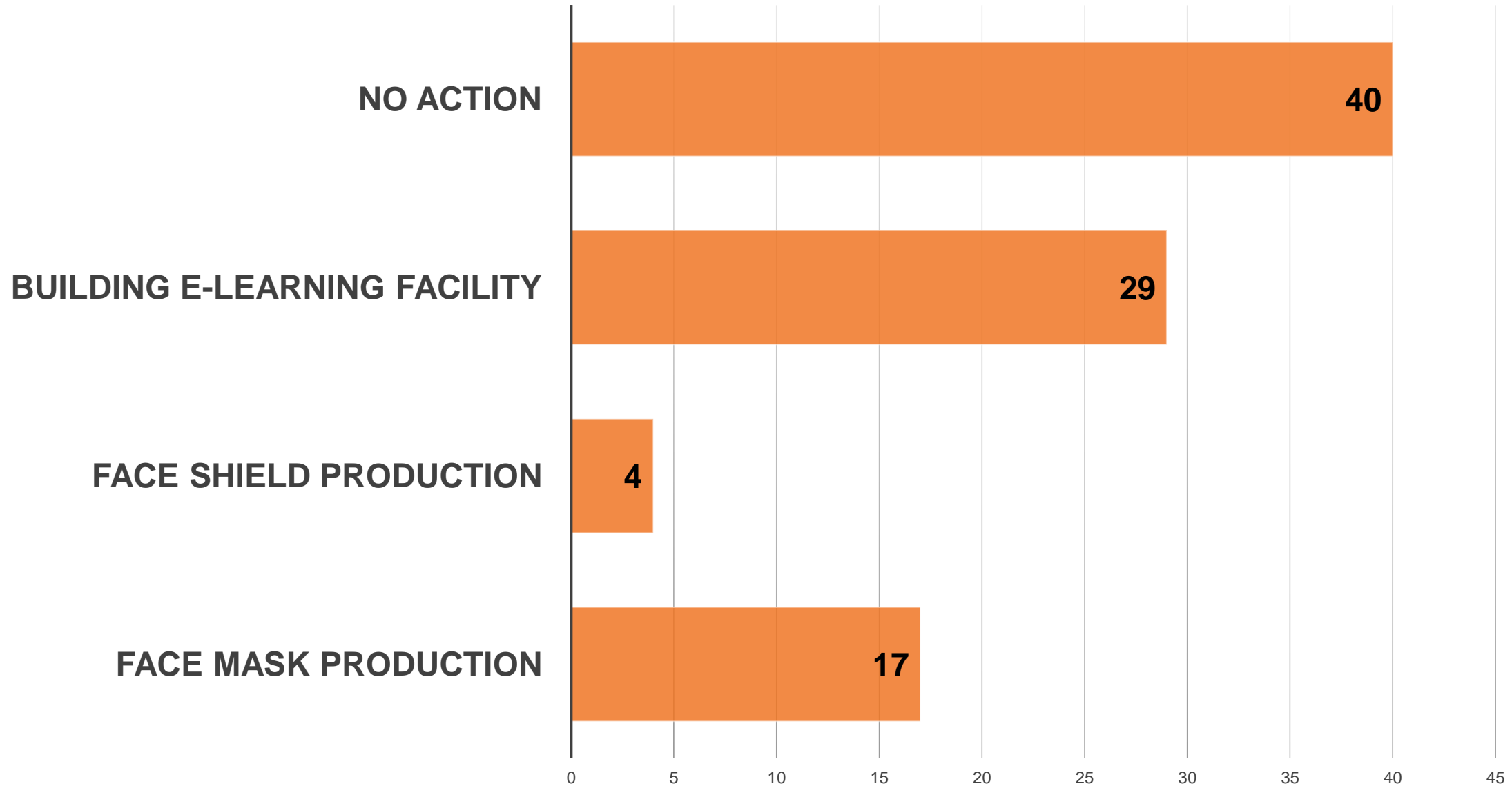
100



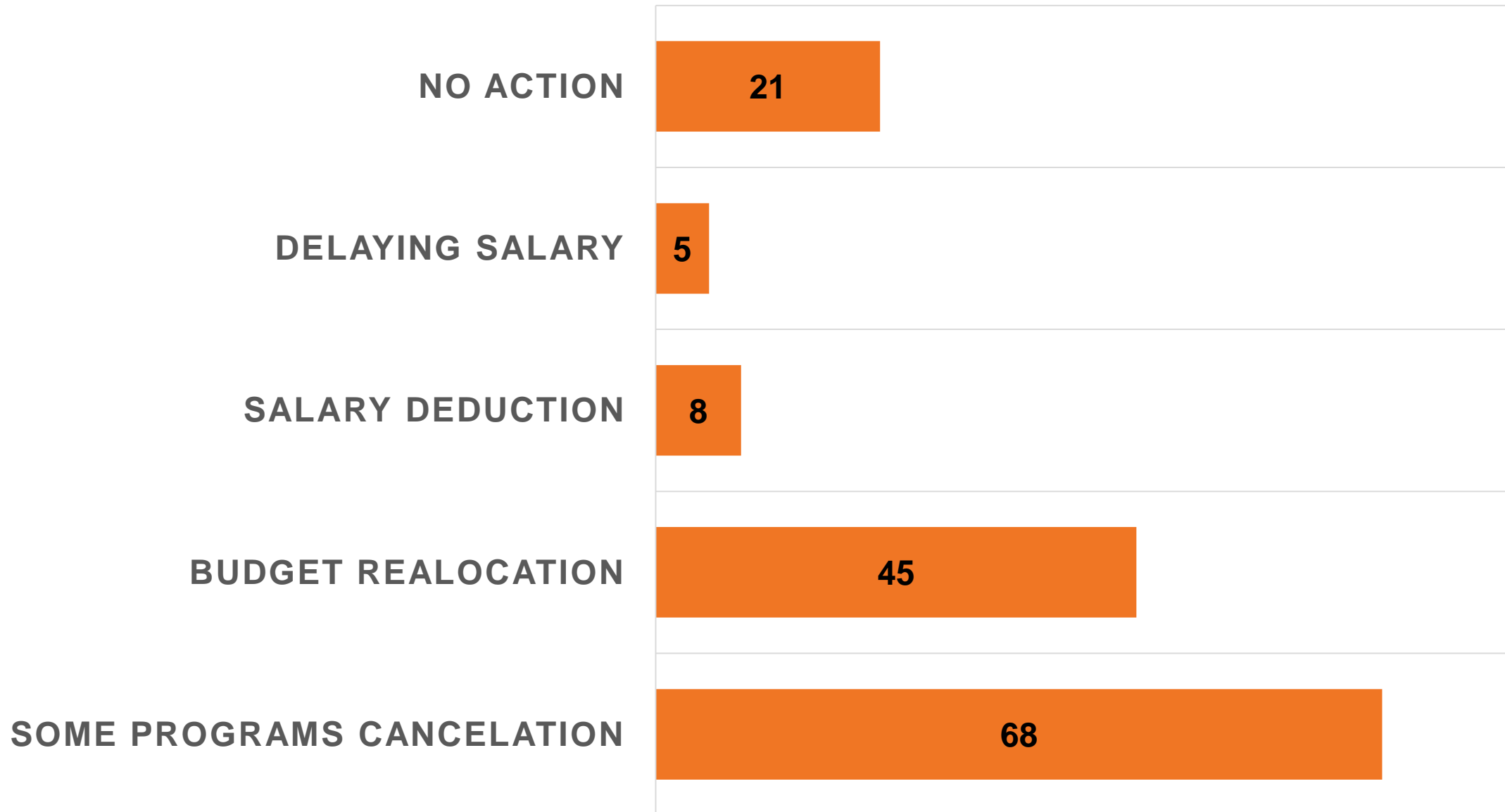
# POLICY TO THE LECTURER AND ADMINISTRATION STAFF



# CREATIVITY of UNIVERSITIES

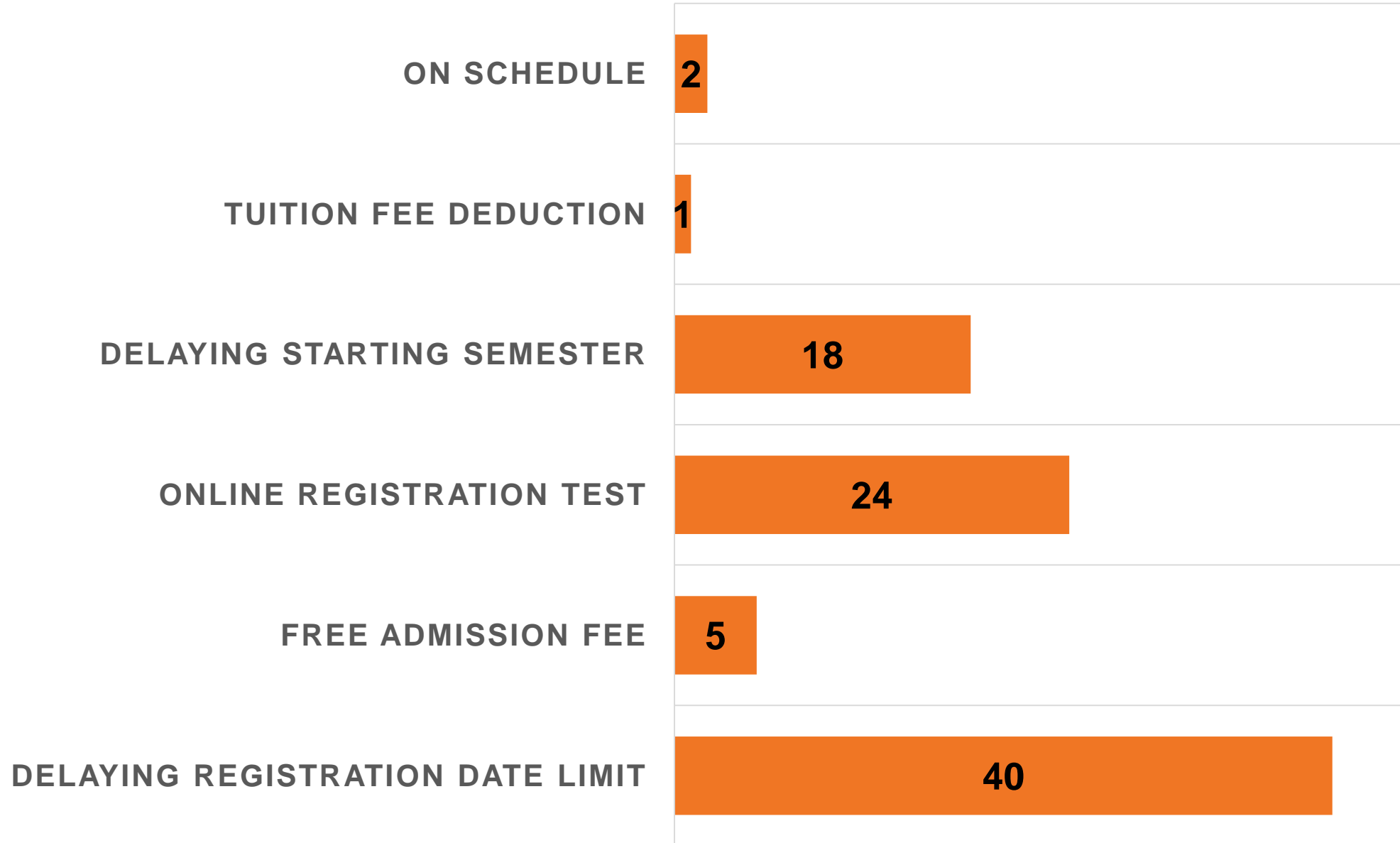


# COVID-19 PANDEMIC IMPACT ON INSTITUTIONS

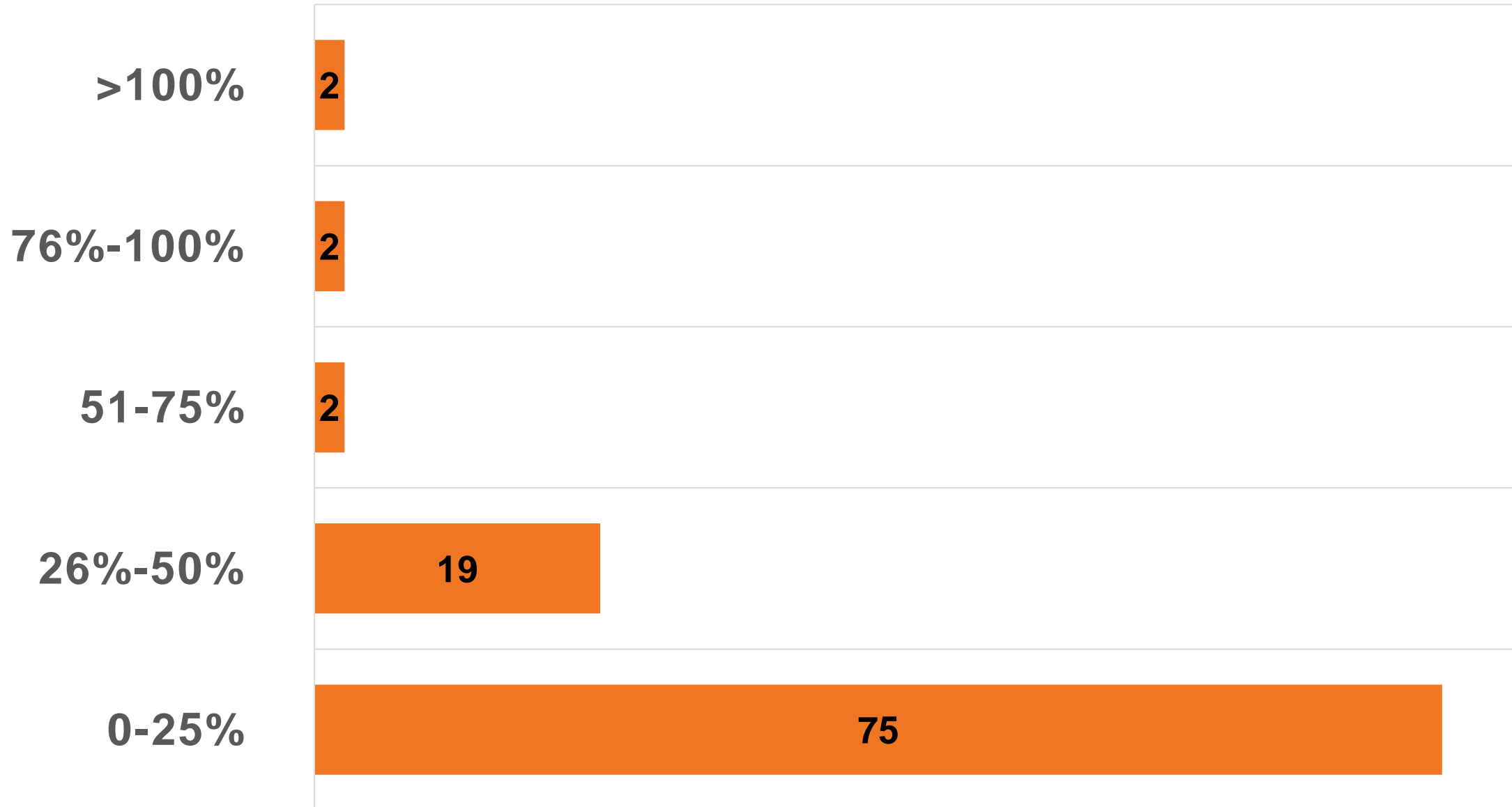




# SPECIAL INITIATIVE FOR NEW STUDENTS ADMISSION



# NEW STUDENTS TARGET





# Government Policy



**School From Home (SFH)**  
up to end of the year



**Work From Home (WFH)**  
only 50% employee working in shift are  
allowing to work at the office

# Regional Higher Education **Service**

**Our  
Service**



**Focusing on the  
Criteria of  
Accreditation**



# ACCREDITATION STANDARD

1. **Vision and Mission**
2. **Higher Education Institute Governance**
3. **Student**
4. **Human Resource**
5. **Budgeting**
6. **Curriculum / Academic**
7. **Research**
8. **Extension**
9. **Outcome**



# OUR SERVICES, based on online service

- 01 Human Resource
- 02 Research
- 03 Extension
- 04 Academic
- 05 Accreditation
- 06 Develop University and Study Program Services



A stylized world map in a light blue color is centered in the background of the image. The map shows the outlines of continents and oceans.

THANK YOU

